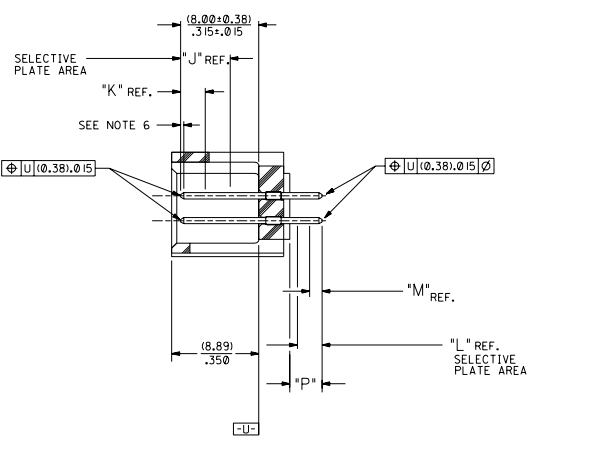
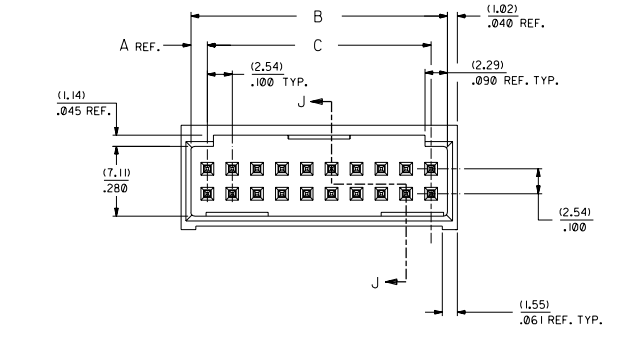
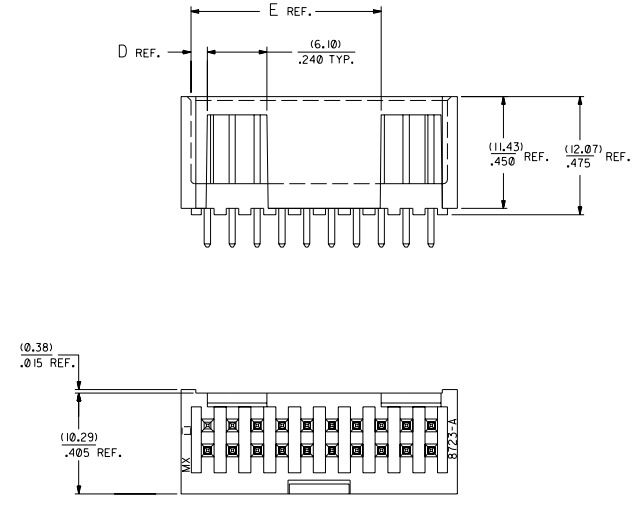


RECOMMENDED P.C. BOARD HOLE LAYOUT



SECTION J-J



- NOTES:**
- 1- 20 CIRCUIT SIZE SHOWN FOR ILLUSTRATION PURPOSES.
 - 2- PIN PUSHOUT FORCE: (17.79 N) 4 LBS.
 - 3- PINS MUST MEET SOLDERABILITY SPEC. MIL-STD-202 METHOD 208B.
 - 4- WINDOW NOT AVAILABLE ON 6 AND 8 CIRCUIT SIZE.
 - 5- FOR CHARTED DIMENSIONS AND ASSEMBLY NO.S NOT SHOWN ON THIS SHEET - SEE SHEET 2.
 - 6- ROW TO ROW PIN HEIGHT VARIATION MUST NOT EXCEED (0.13)/.005 IN.
 - 7- PRODUCT CONFORMS TO PS-8723.

CKT.	8723			
	DIM. 'A'	DIM. 'B'	DIM. 'C'	DIM. 'D'
06	(1.68) .066	(8.43) .332	(5.08) .200	(1.68) .066
08	(1.68) .066	(10.97) .432	(7.62) .300	(1.68) .066
10	(1.68) .066	(13.51) .532	(10.16) .400	(4.22) .166
12	(1.68) .066	(16.05) .632	(12.70) .500	(4.22) .166
14	(1.68) .066	(18.59) .732	(15.24) .600	(16.76) .266
16	(1.68) .066	(21.13) .832	(17.78) .700	(16.76) .266
18	(1.68) .066	(23.67) .932	(20.32) .800	(9.30) .366
20	(1.68) .066	(26.21) 1.032	(22.86) .900	(1.68) (19.46) .766
22	(1.68) .066	(28.75) 1.132	(25.40) 1.000	(1.68) (22.00) .866
24	(1.68) .066	(31.29) 1.232	(27.94) 1.100	(1.68) (24.54) .966
26	(1.68) .066	(33.83) 1.332	(30.48) 1.200	(1.68) (27.08) 1.066
28	(1.68) .066	(36.37) 1.432	(33.02) 1.300	(1.68) (29.62) 1.166
30	(1.68) .066	(38.91) 1.532	(35.56) 1.400	(1.68) (32.16) 1.266
32	(1.68) .066	(41.45) 1.632	(38.10) 1.500	(1.68) (34.70) 1.366
34	(1.68) .066	(43.99) 1.732	(40.64) 1.600	(1.68) (37.24) 1.466
36	(1.68) .066	(46.53) 1.832	(43.18) 1.700	(1.68) (39.78) 1.566
38	(1.68) .066	(49.07) 1.932	(45.72) 1.800	(1.68) (42.32) 1.666
40	(1.68) .066	(51.61) 2.032	(48.26) 1.900	(1.68) (44.86) 1.766
42	(1.68) .066	(54.15) 2.132	(50.80) 2.000	(1.68) (47.40) 1.866
44	(1.68) .066	(56.69) 2.232	(53.34) 2.100	(1.68) (49.94) 1.966
46	(1.68) .066	(59.23) 2.332	(55.88) 2.200	(1.68) (52.48) 2.066
48	(1.68) .066	(61.77) 2.432	(58.42) 2.300	(1.68) (55.02) 2.166
50	(1.68) .066	(64.31) 2.532	(60.96) 2.400	(1.68) (57.56) 2.266
52	(1.68) .066	(66.85) 2.632	(63.50) 2.500	(1.68) (60.10) 2.366
54	(1.68) .066	(69.39) 2.732	(66.04) 2.600	(1.68) (62.64) 2.466
56	(1.68) .066	(71.93) 2.832	(68.58) 2.700	(1.68) (65.18) 2.566
58	(1.68) .066	(74.47) 2.932	(71.12) 2.800	(1.68) (67.72) 2.666
60	(1.68) .066	(77.01) 3.032	(73.66) 2.900	(1.68) (70.26) 2.766
62	(1.68) .066	(79.55) 3.132	(76.20) 3.000	(1.68) (72.80) 2.866
64	(1.68) .066	(82.09) 3.232	(78.74) 3.100	(1.68) (75.34) 2.966
66	(1.68) .066	(84.63) 3.332	(81.28) 3.200	(1.68) (77.88) 3.066
68	(1.68) .066	(87.17) 3.432	(83.82) 3.300	(1.68) (80.42) 3.166
70	(1.68) .066	(89.71) 3.532	(86.36) 3.400	(1.68) (82.96) 3.266
72	(1.68) .066	(92.25) 3.632	(88.90) 3.500	(1.68) (85.50) 3.366

MATERIAL:
SHROUDED WAFER: GLASS FILLED POLYESTER, 94V-0; COLOR: BLACK.
PINS: PHOSPHOR BRONZE, SEE SHEET 2 FOR FINISHES.

ASSEMBLY STYLE "A" AND "B"

U ADD -3803 OPT
DCP-2004-2268
DMORGAN 04/05/20

T LEAD FREE
USP2004-170
RU WHITE 04/04/26

S ADD -3802 OPTION
ECN #029204-102
DMORGAN 04/01/2

R2 TAB DIF DIM 6 CIR
ECN #010999-0145
DMORGAN 56/09/01

R1 ADD WDG LATCH NOTE
ECN #010998-0399
DMORGAN 56/06/23

R ADDED SHEET 7

O REMOVE FDP NO.S
PER ECR NO US0225
05-04-93 B.S.

P CHGD WINDOW NOTES
PER ECR NO US30316
05-04-93 B.S.

O CHANGED MATERIAL
PER ECR NO US0146
01-22-93 B.S.

R2 REVISED & REDRAWN
PER ECR NO US2073
05-29-92 B.S.

LTR REVISIONS

YES NO REVISIONS MUST BE INDICATED BY DIMENSION LINES

YES NO REVISIONS MUST BE INDICATED BY DIMENSION LINES

DIMENSION	SHOWN	METRIC	INCH
1 PUNCH	--- ± .005	---	---
2 PUNCH	± .01 ± 0.13	---	---
1 PUNCH	--- ± 0.25	---	---

MATERIAL: MOLEX INCORPORATED (SHEET NO. 1 OF 7) DATE: 08/97/17
PART NO. S8723A11
REV: 4

SEE CHART SDA-8723-*****

DWG. NO. S8723A11
SCALE: 4:1

DATE: 08/97/17
BY: DA

